



End-to-End growth solution for Manufacturing Industries

fruiSCE

MANUFACTURING EXECUTION

fruiSCE® Manufacturing Execution (MES) helps organizations to plan, execute, manage, and monitor production process. MES supervises machines, operators, resources, and inventory with complete traceability across manufacturing process. Work center level reporting for material balancing, operation time, operational performance and machine data is reported seamlessly against each production order. By capitalizing all the production data in real time, the MES has low level visibility of each works center including its status and performance with a granularity in the order of a minute thus making it a complementary tool of the ERP which has a higher level global view. The data captured through machines are seamlessly transferred to fruiSCE® MES through various protocols. This enable to reduce variability in manufacturing execution and reduce total lead time. Because of its central role, MES is an invaluable tool for effectively managing the production process by optimizing the flow of information and providing operators and managers with fast actionable data to minimize disruption. The standards connected with MES are ISA S88 and S95.

Key Benefits

- Reduce manufacturing cycle time
- Eliminate/minimize data entry time
- Reduce work-in-process inventory
- Smooth handover of responsibilities between shifts
- Improves product quality
- Data driven decisions
- Empowers plant operations people
- Improves customer service
- Improve response to unanticipated events

fruiSCE® Manufacturing Execution Key Features

Production Order Processing	Time and Labor Management
Work Center Management	Material Balancing & Quality
Performance Management	S&OP
Data Management	Manufacturing Analytics



fruiSCE® Supply Chain Excellence Systems

Warehouse Management	Manufacturing Execution
Transportation Management	Supply Chain Planning
Global Trade Management	Supply Chain Control Tower

SOFTWARE | IMPLEMENTATION | SUPPORT | RESOURCES

- Lean Manufacturing
- Quality and Six Sigma
- Enable Paperless Shop Floor Processing
- Consolidation of Legacy Applications & Systems
- Regulatory Compliance
- Making Ongoing Training
- Greater Flexibility & Efficiency with Open Standards
- Synchronized Production Process
- Optimal supply chain management

Industry Best practices

ERP INTEGRATION

- Production Order
- Production Schedule
- Bill of Materials/ Formula
- Routing Master
- Estimated Materials
- Actual Raw Material Consumption
- Finish Product Receipt
- Variance Reporting
- Machine Hours
- Scrap & Losses
- Labour Hours
- Operational Costs
- Lead Times
- Efficiency & Utilization

UTILITIES & SCANNERS INTEGRATION



MACHINE DATA INTEGRATION

SMART MACHINES



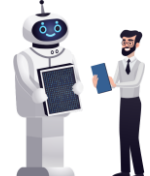
RFID READING



SENSORS



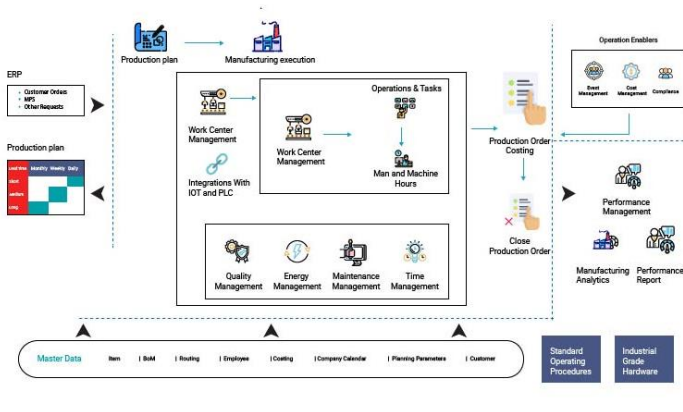
MACHINE LEARNING & BIG DATA



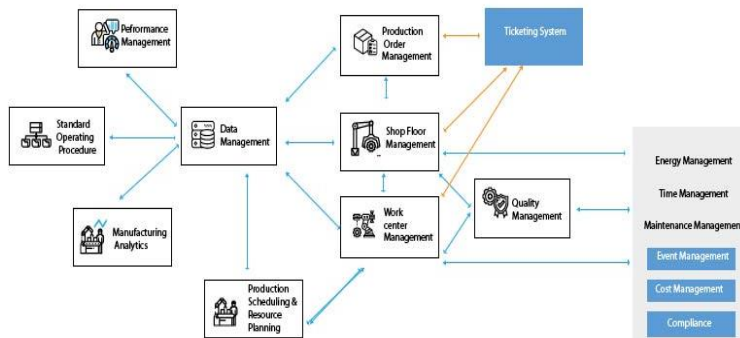


End-to-End growth solution for Manufacturing Industries

fruiSCE Manufacturing Execution



Module Connectivity



fruiSCE™ MES BUSINESS PROCESS

Production Order Management – Controls and executes sequences of completion of a production order with defined production scheduling and production order processing.

Work Center Management – Manages all the steps with reporting and control on the line of Operations to be done required to complete production of specified product with predefined routing by managing safety, maintaining equipment and employee worksheet and production process data.

Statistical Process Control – Helps to ensure that the production process operates efficiently, Producing conforming products with less rework or Scrap

Maintenance Management – Involves functional checks, servicing, repairing or replacing equipment or machinery on the basis of the performance of tasks required to ensure continuing production of products by preventive, planned, predictive or condition – based maintenance or replacement.

Time and Attendance – Used to track and monitor start and stop work of employees so that monitoring employee working hours, late arrivals, early departures, time taken on breaks and absenteeism becomes easy.

Performance Analysis – Act proactively to detect machine faults and early diagnostic and part replacements and to increase overall productivity and lead time Performance analysis is done

Cost management – Determines all process expenses pertaining the product production including raw material purchases, worker wages, production transportation costs and stocking fees etc.

Event Management – Alerts or warns when production process is disturbed because of a sudden challenge in exact problem in production area by giving an immediate notification to control the problem as priority so as to maintain continuity in production activity.

Product Traceability – Helps to locate the exact position of the product in the production area with details of the processes done on the raw material and remaining processes to complete the product production stating the updated status by a flow chart.

Quality Assurance – It includes quality management of raw materials, assemblies, products and components and services related to production, management and inspection processes.

Compliance and risk Management – Identifies the major inherent risks within the production area, factors in any processes and procedures practiced by the production planning to control the processes by designed framework

INDUSTRY KPIs

Production Efficiency

Labour Efficiency

Lead Time

OEE

Customer Service Level

Resource Availability



Reach us for product demonstration or expert advice ►

Ramesh B, Head – Sales & BD
Ramesh.b@datalabsindia.com
+91 98855 71360

M Khalid Qurashi
Business Development Manager
Mkqurashi@datalabsindia.com
+91 9000222465

About Data Labs India Solutions Pvt. Ltd.

Data Labs India is a digital transformation company helps organizations to achieve business excellence through robust business processes and cutting edge technologies. We innovate and develop products and services with best in class industry practitioners and technology architects to solve complex problems in supply chain management, strategy execution, enterprise performance management, enterprise resource planning, and business analytics.

Corporate Office India

Data Labs India Solutions
28-7-154-2, APHB Colony,
Anantapur – 515001
Andhra Pradesh, INDIA
Mail: info@datalabsindia.com

Hyderabad Office India

Data Labs India Solutions
#406, 5th Floor,
Pavani Plaza, Khairathabad,
Hyderabad – 500004,
Telangana, INDIA

Office UAE

Data Labs International FZ LLC
FDBC008 Service Block
Al Jazirah Al Hamra
RAKEZ Business Zone-FZ
Ras Al Khaimah,
United Arab Emirates